



Waiting area



MEITRACK MD600 CONSTRUCTION VEHICLE SAFE TRANSPORTATION SOLUTION

Using BSD technology to make up for the blind spots of Construction Vehicle

Meitrack Team
Unloading area

Keyword :

Blind Spot Monitoring

Safe Driving

Construction Vehicle

A- Pillar DMS

www.meitrack.com

Construction area

Catalogue

01. Project Background

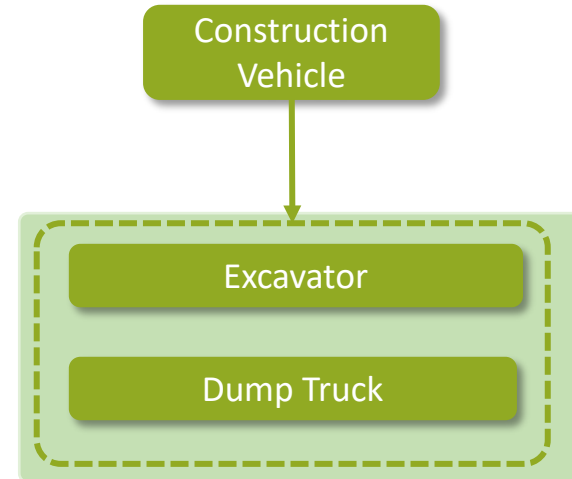
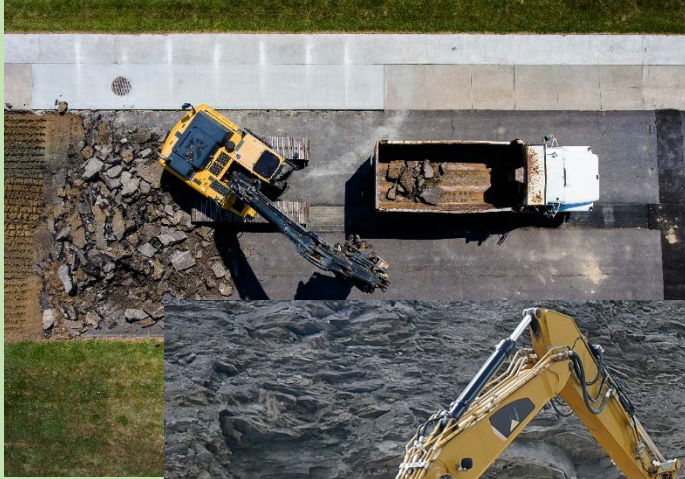
02. Solution

03. Presentation

04. Why Meitrack

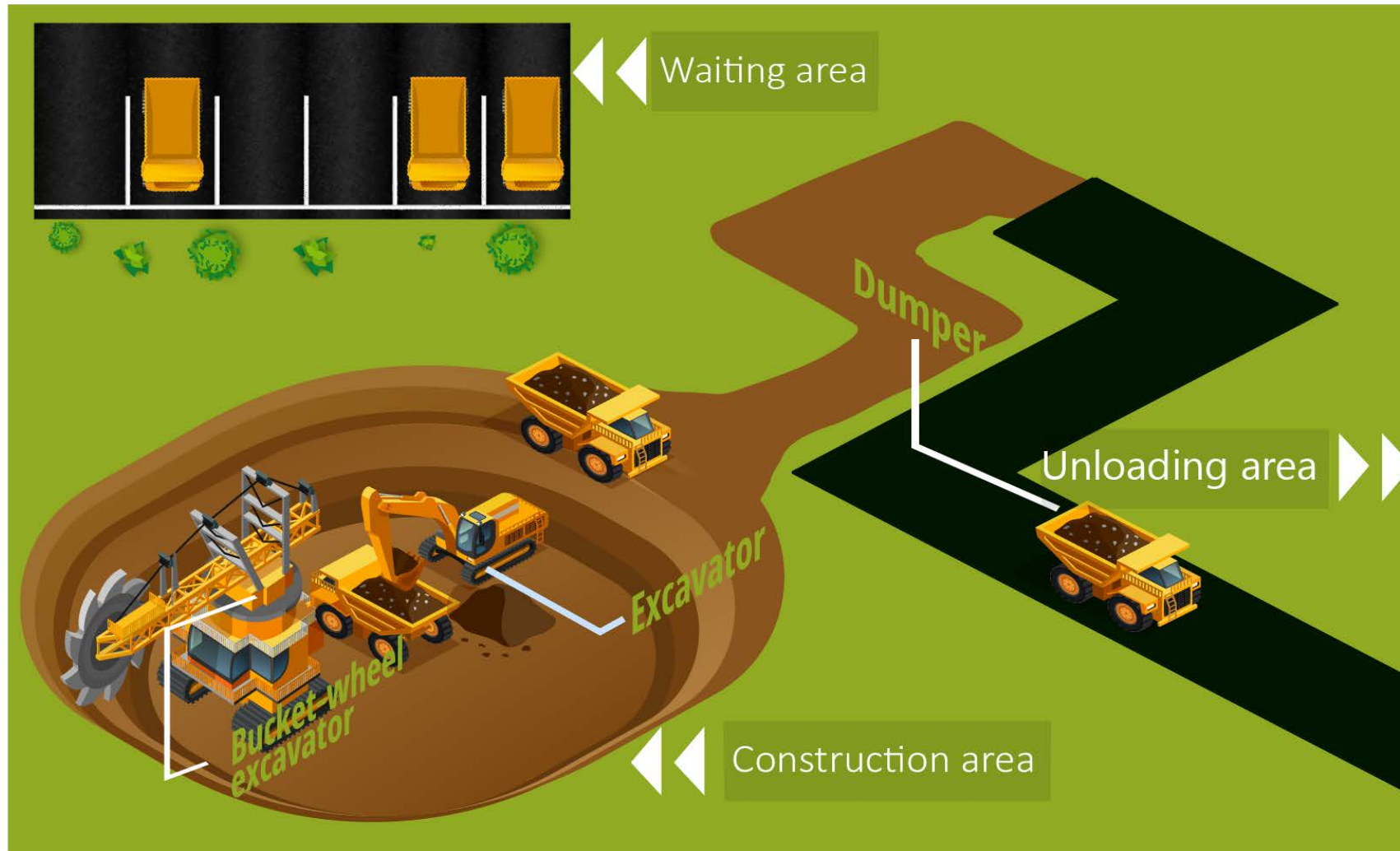
Project Background

Project Background



Construction sites in cities generate a large amount of slag every day, which needs to be transported to the appropriate area in time to ensure the smooth progress of the project. Excavators and dump trucks play an important role in this process. However, how to reduce the accident rate during construction site operations and reduce casualties to zero is an important issue.

Project Background

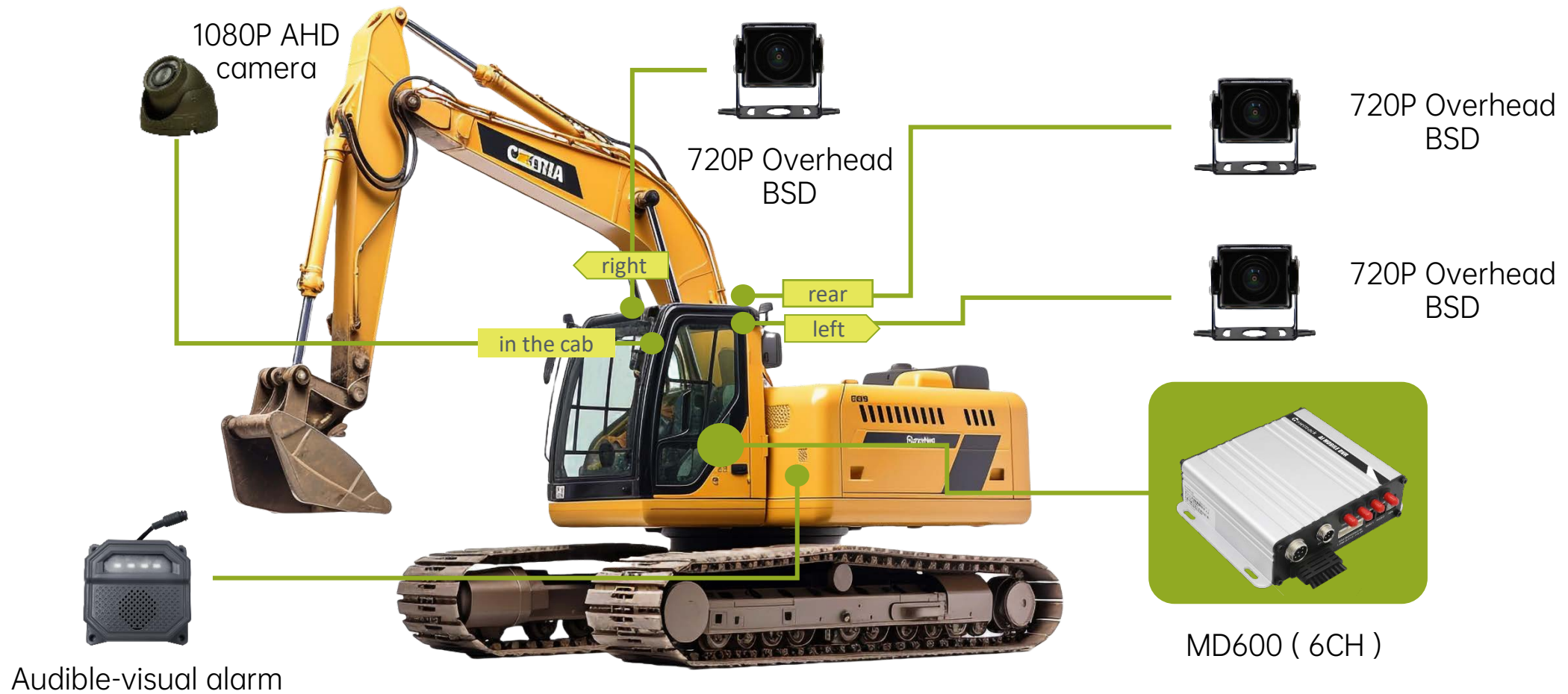


As shown in the figure above, a dumper passes through the construction area, loads the slag and drives to the unloading area. However, construction vehicles such as excavators and dumpers have certain blind spots during transportation. Meitrack 's MD600+BSD solution can make the entire transportation process safer.

An isometric illustration of a construction site. In the center is a large yellow bulldozer. To its left is a yellow dump truck. In the top right corner is a large stack of white concrete blocks. Several construction workers in orange and yellow safety gear are scattered around the site, some holding blueprints. In the bottom right, a worker is using a metal detector. A white fence runs along the bottom left. The word 'Solution' is written in the center in a bold, italicized black font.

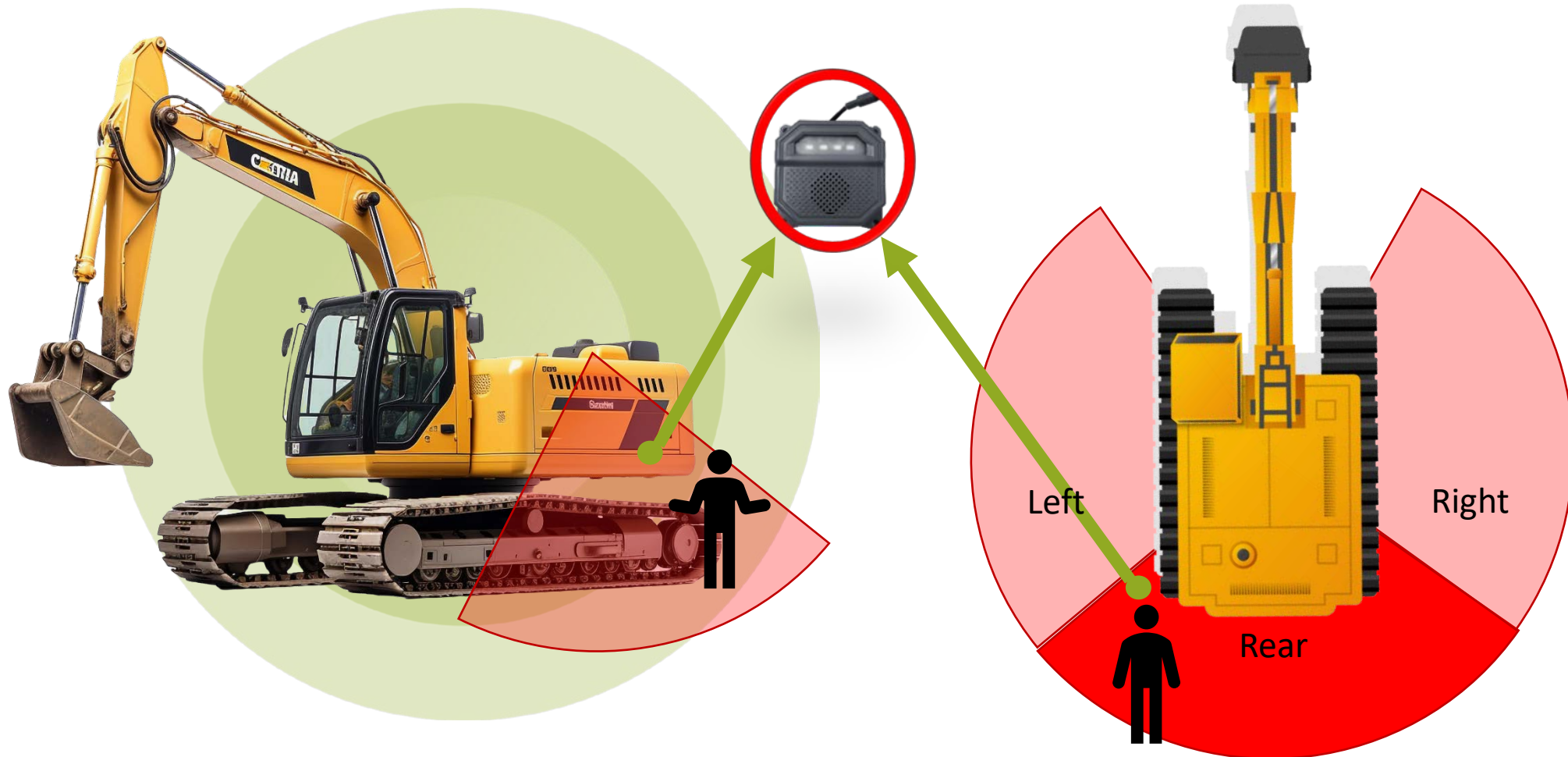
Solution

Solution



MD600+ audible-visual alarm +BSD cameras can make up for the blind spots of the excavator

Solution



Installing BSD cameras on the left and right sides and rear of the excavator can fully monitor the blind spot area.

Solution



A -pillar DMS



MD600 (6CH)



720P Overhead
BSD



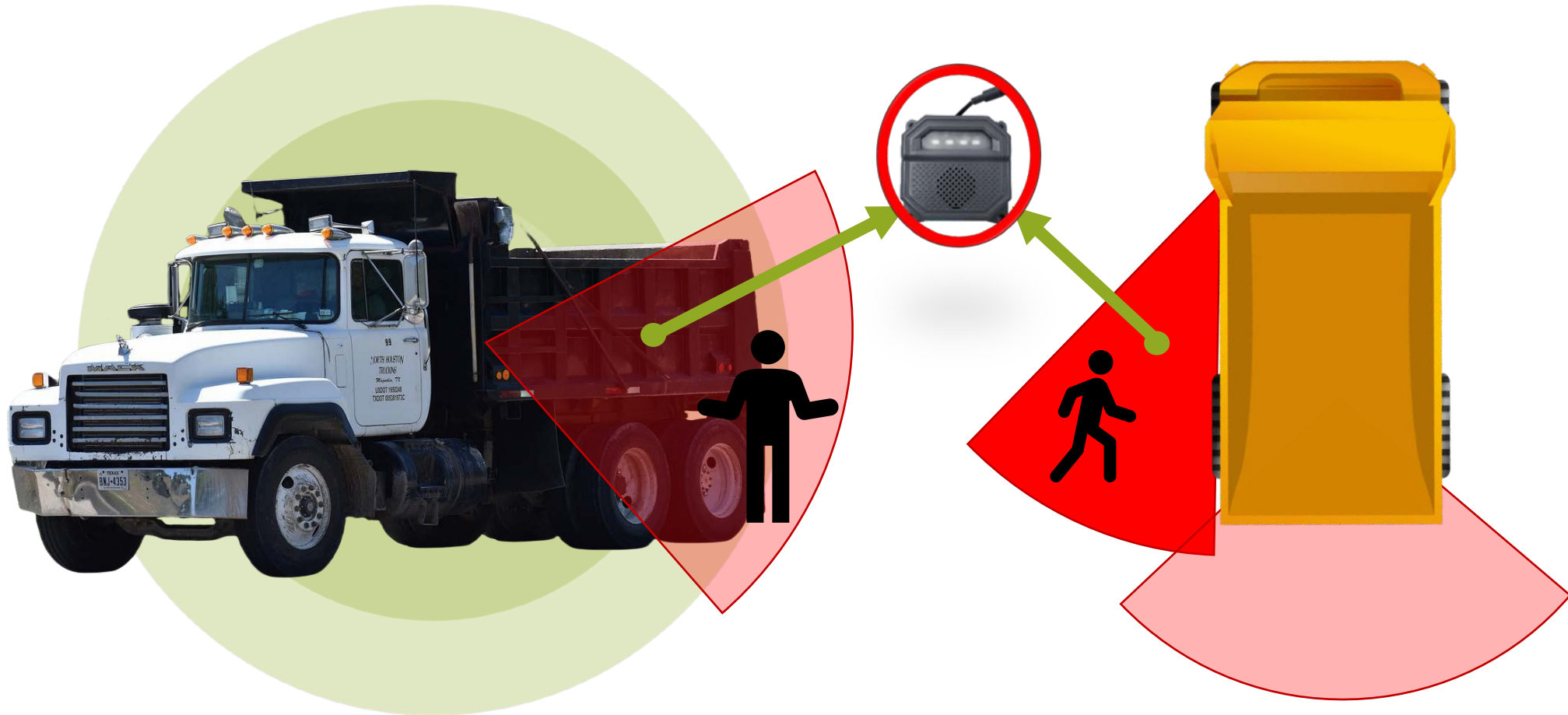
720P Overhead
BSD



Audible-visual
alarm

A -pillar DMS can avoid blocking the driver's view, while the Starlight BSD camera can ensure that it can also take pictures in weak light.

Solution



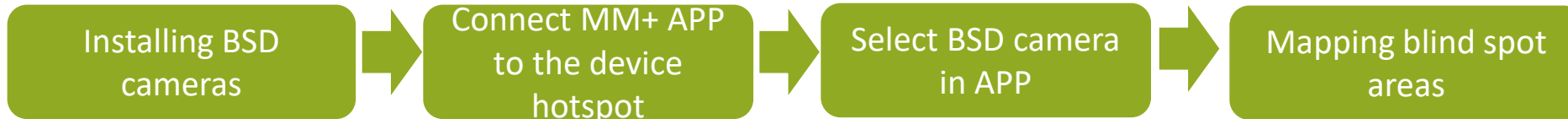
BSD cameras can be installed on the rear and sides of the dump truck . When pedestrians walk into the blind spot area, the audible-visual alarm will warn the driver and pedestrians.

Solution



As shown in the figure above, when an dump truck is driving on the road, if a pedestrian is detected passing through the blind spot area, the audible-visual alarm will be triggered, then the event and video will be uploaded to server at the same time.

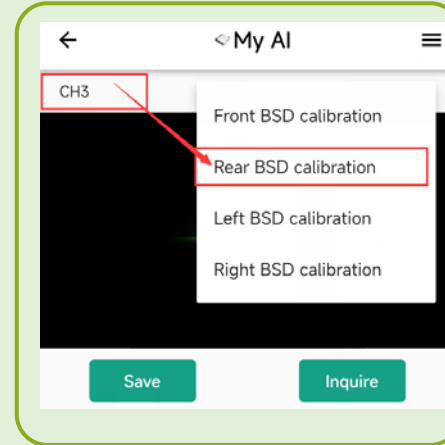
Solution



Install BSD cameras on the side and rear of the dump truck



Install the MM+ APP and connect to the MD600 's hotspot



Configuring BSD to the appropriate location



Define appropriate detection areas for every BSD cameras



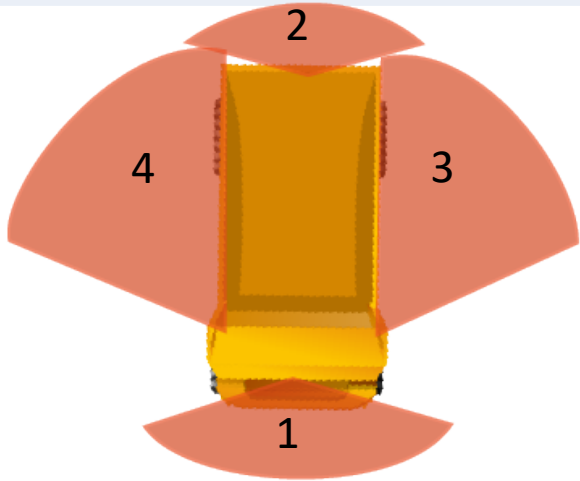
speaker

Led

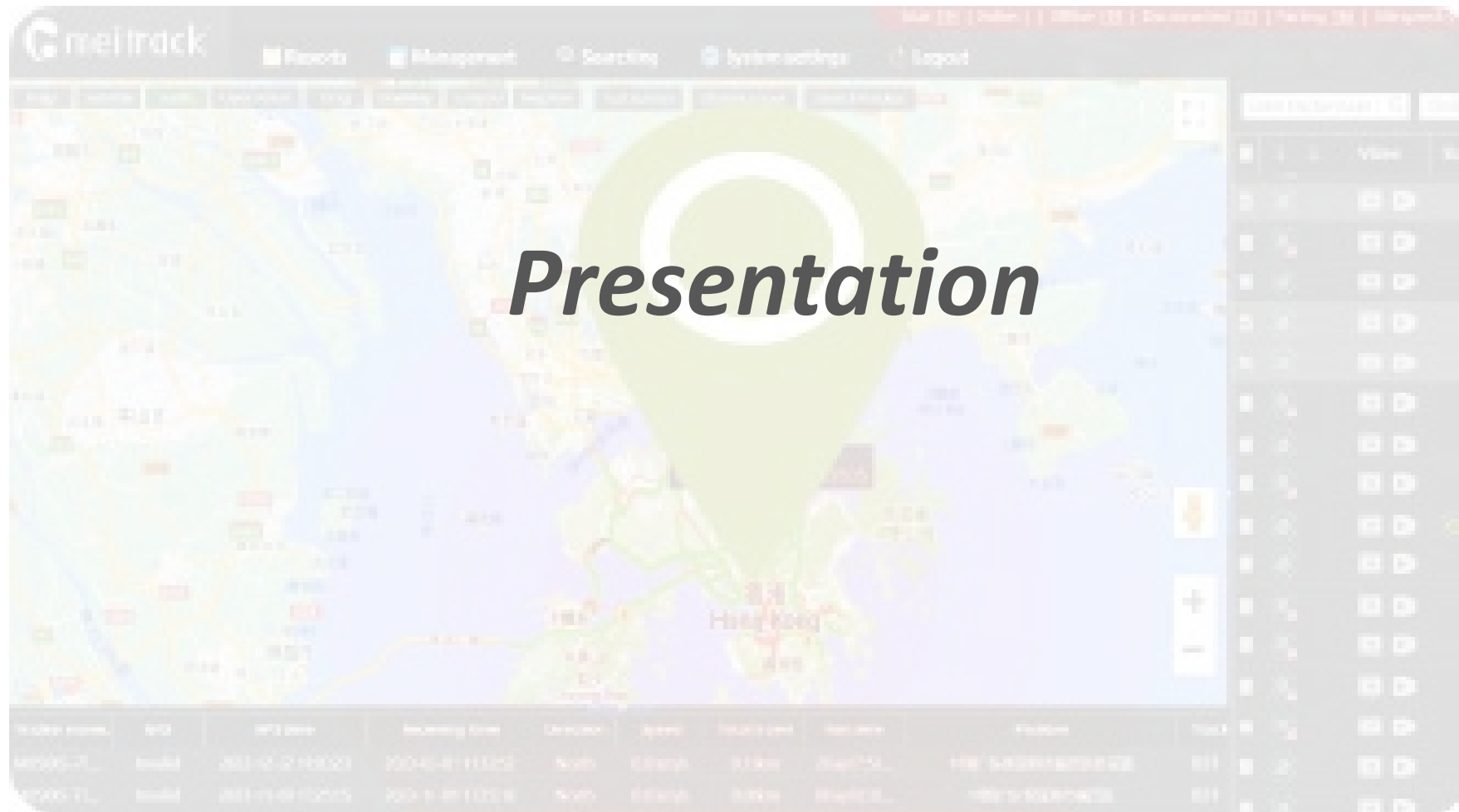
10m RS485 cable

Audible-visual
alarm

Serial number	BSD Camera	BSD Alarm
1	Front	Front blind spot warning
2	Rear	Rear blind spot warning
3	Left	Left blind spot warning
4	Right	Right blind spot warning



The audible-visual alarm can alert pedestrians and drivers to danger through both sound and vision.



Presentation -GPS Positioning and Video Monitoring

Video monitoring/recording



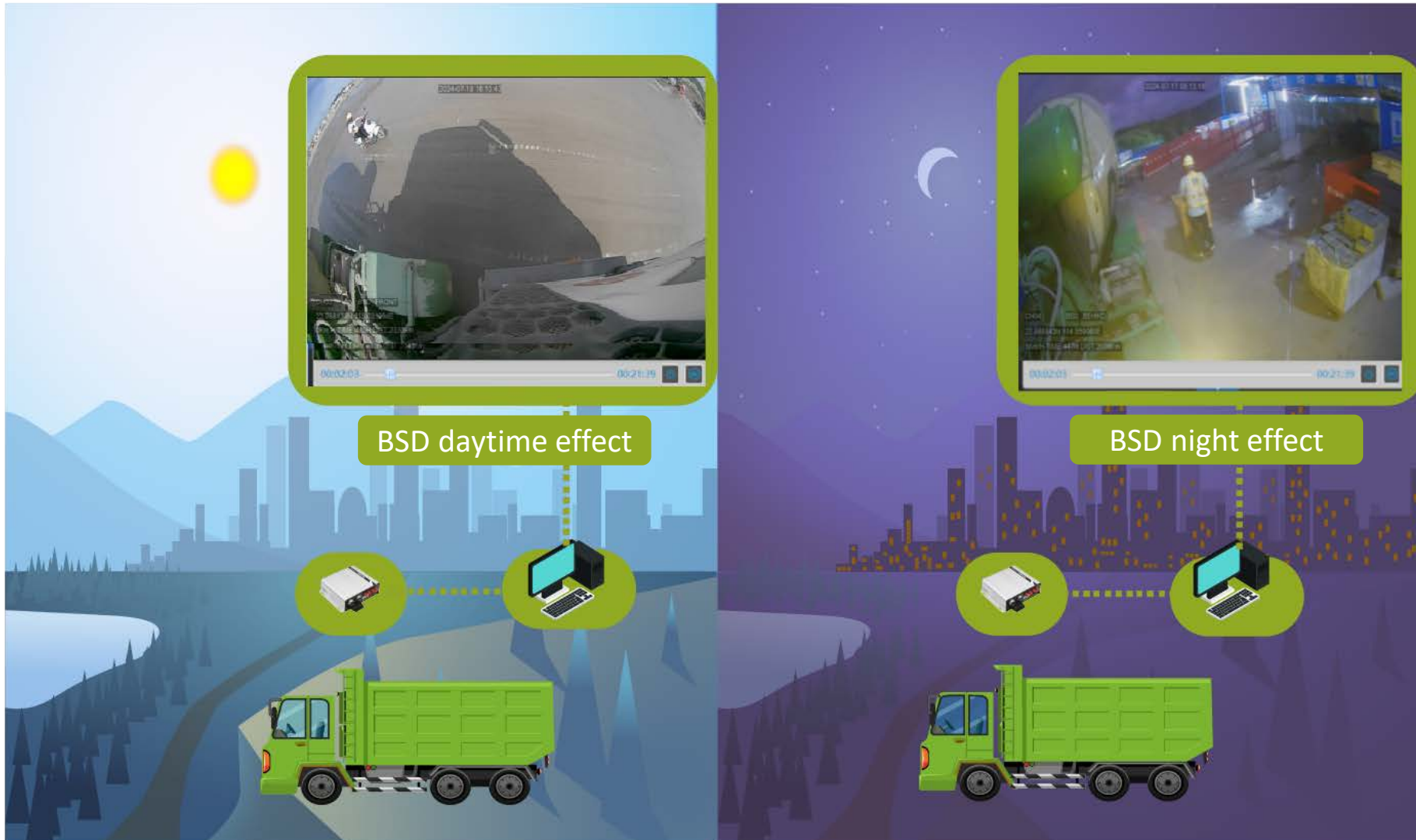
GPS tracking



MD600

MD600 has a total of six channels, the clients can choose up to four AI cameras .
MD600 will upload real-time video and positioning information to the platform

Presentation –Starlight BSD Camera



BSD starlight camera can still achieve good detection results even at night as long as there is weak light (as shown above)

Presentation -Event Report



Track playback



BSD alarm screenshot



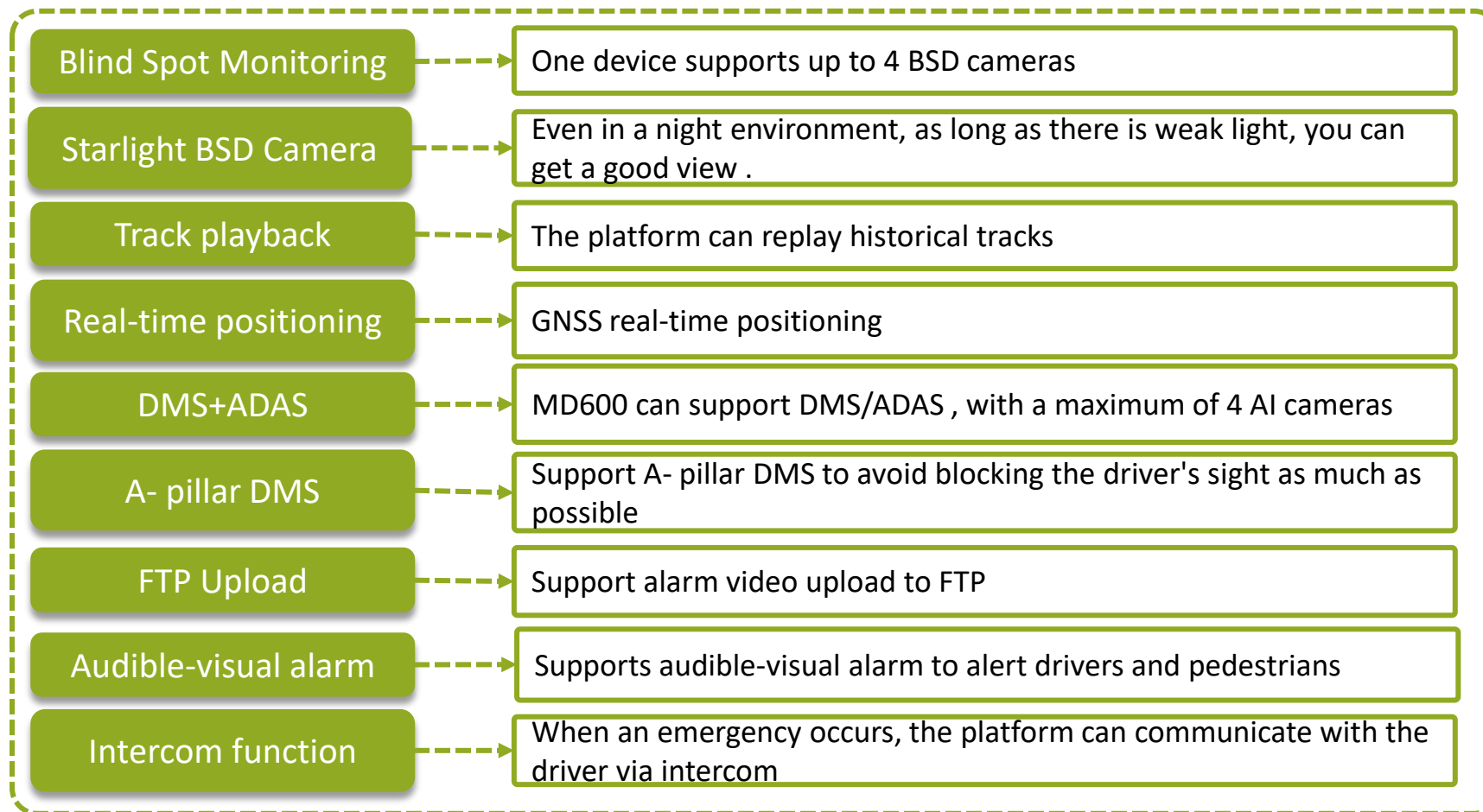
Tracker name	Alarm type	GPS time	Receiving time	GPS valid	Position
shanwei MD600-...	Cornering	2024-07-13 07:30:02	2024-07-13 07:30:12	Valid	
shanwei MD600-...	Input 2 Inactive	2024-07-13 07:30:18	2024-07-13 07:30:21	Valid	
shanwei MD600-...	Stop Moving	2024-07-13 07:30:18	2024-07-13 07:30:22	Valid	
shanwei MD600-...	Enter Sleep	2024-07-13 07:35:25	2024-07-13 07:35:27	Valid	
shanwei MD600-...	Exit Sleep	2024-07-13 07:39:24	2024-07-13 07:39:30	Valid	
shanwei MD600-...	Input 2 Active	2024-07-13 07:39:24	2024-07-13 07:39:40	Valid	
shanwei MD600-...	Start Moving	2024-07-13 07:39:24	2024-07-13 07:39:40	Valid	
shanwei MD600-...	Cornering	2024-07-13 07:39:58	2024-07-13 07:40:02	Valid	
shanwei MD600-...	Cornering	2024-07-13 07:40:00	2024-07-13 07:40:04	Valid	
shanwei MD600-...	Cornering	2024-07-13 07:40:03	2024-07-13 07:40:31	Valid	
shanwei MD600-...	Cornering	2024-07-13 07:40:09	2024-07-13 07:40:31	Valid	
shanwei MD600-...	Dangerous alarm in front blind	2024-07-13 07:40:47	2024-07-13 07:40:48	Valid	
shanwei MD600-...	Dangerous alarm after the blind	2024-07-13 07:40:50	2024-07-13 07:40:54	Valid	
shanwei MD600-...	Dangerous alarm after the blind	2024-07-13 07:40:58	2024-07-13 07:40:59	Valid	
shanwei MD600-...	Dangerous alarm after the blind	2024-07-13 07:41:05	2024-07-13 07:41:06	Valid	

Speed

Position

Users can replay the track on the platform, and can also check the BSD alarm event records and picture evidence in the event report.

Presentation - Advantages





Why Meitrack

Professional

Meitrack has been continuously developing in the GPS field for 20 years, the stability and functionality of the products have been tested by the market for a long time

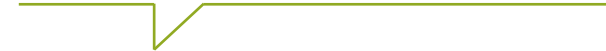


Good Service

Meitrack's aim has always been to focus on the customer and to provide the highest quality service

Customizability

To provide customers with the functional customization to meet the needs of the project, it is not only a sense, but also a capability



Innovation consciousness

We are not afraid to push our limitations and are willing to innovate to adapt to the changing markets

 meitrack™ | THANKS

www.meitrack.com

Meitrack Group

Tel : 0755- 83462818

Fax : 0755-23832013

E-mail: info@meitrack.com

Website : <http://www.meitrack.com>

Address : international Internet Finance Pioneer
Park, No 1, Taohua Rd, Futian Free Trade Zone,
Shenzhen, China. 518038